

High-Performance Door

ASSA ABLOY RR300 Clean

ASSA ABLOY

ASSA ABLOY Entrance Systems

The global leader in
door opening solutions



Fraunhofer

**TESTED
DEVICE**

ASSA ABLOY Entrance Systems
ASSA ABLOY RR300 Clean
Report No. AL 1003-514

ASSA ABLOY RR300 Clean

- ISO Class 5, GMP Class C
- Cleanroom suitability with PVC-Curtain certified by Fraunhofer Institute
- Fulfills international standards and guidelines for cleanroom applications in accordance with DIN EN ISO 14644-1 and GMP
- Low particle emission
- Low air exchange thanks to fast opening and closing speed

DOOR DESIGN

The entire door (side frame, motor and roll cover, and bottom profile) is made from stainless steel V2A. The smooth surface facilitates easy cleaning and avoids the accumulation of particle deposits.



NARROW SIDE COLUMNS / MINIMAL GAP

The dimensions of the door's side columns are kept to a minimum and allow the door to be installed in confined areas. The extremely small gap of the door curtain guide ensures minimal pressure loss.



CABLE GUIDE SEALING

To prevent pressure losses, the cable guide is integrated and access openings inside the door are sealed.



DOOR CURTAIN

The door curtain consists of PVC with white fabric reinforcement strips. Fabric reinforcement strips in a wide variety of RAL colors are available as option.



BOTTOM PROFILE

There is only a small gap between the bottom profile and the side columns. This minimizes the pressure loss when the door is closed.



SAFETY FEATURES

The door is equipped with an electrical safety contact edge. A contactless pre-running photocell is an available option. In addition the door is equipped with a door line photocell which prevents the door from closing when an object is in the doorway.



INTEGRATED CABLE GUIDE

The cables are located in the side columns to provide a smooth surface and avoid surface irregularities that increase particle turbulence.

The supply cables of the pre-running safety photocell and the electrical safety contact edge are guided reliably by internal cable carrier chain.





TOP ROLL COVER / MOTOR COVER / DRIVE UNIT

The door comes standard with top roll and motor covers. The drive unit is a geared brake motor. It can be fitted on the right or left.



FREQUENCY CONVERTER CONTROL SYSTEM

The door is equipped with the frequency converter control system MCC, which supports a wide range of speeds, supply voltages and options for connecting control and safety devices. The MCC system is integrated in the overall structure under the roll cover. The display unit and main switch are located in the side column, also the UPS battery (independent power supply).



CONTROL UNIT AND MAIN SWITCH

The display unit with its user-friendly foil keypad and graphic display and the main switch are integrated in the side column.



EGRESS

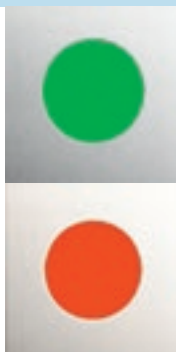
Self opening is available as an option. The USP battery provides the control system for continuous operations after a power failure. UPS error and diagnostic messages are still indicated by LEDs.



INTEGRATED TRAFFIC LIGHT IN THE SIDE COLUMNS

It is possible to signal the movement of the door via a traffic light system which can be inserted into either both side columns or just one side column.

A yellow flashing light or a stationary red/green light is available or a traffic light in separate stainless steel housing could be installed. A red/green traffic light with recognition of direction is possible.



CONTACTLESS ACTUATOR

An optional contactless actuator (Magic-Switch) is available for fast, hygienic opening.



Cleanroom Door ASSA ABLOY RR300 Clean

Production in a controlled environment, such as a cleanroom environment, is common practice in many industries. Some examples are medical applications, pharmaceutical production, research, electronics production, semiconductor production, and space flight. All components used in cleanrooms are subject to stringent requirements. Particularly in these areas, it is important to keep the production stations clean. Therefore, doors as a component of cleanroom areas must prevent undesired air exchange and the uncontrolled entry of airborne particles. For this area, the ASSA ABLOY RR300 Clean is used. This is the first door that has been tested and confirmed by the Fraunhofer Institute for cleanroom suitability.

Advantages of the ASSA ABLOY RR300 Clean High Performance Roller Door

- Well suited to cleanroom isolation in accordance with DIN EN ISO 14644-1 Class 5
- Provides high air-tightness and keeps the pressure drop through the closed door at a minimum
- Fast opening and closing ensures very low air loss and minimize air exchange, which results in a low filter burden and increased cleanroom cost-effectiveness
- Contactless actuator (optional) enables fast, hygienic opening with a simple hand motion
- Integrated traffic light (optional)
- Design in accordance with GMP Class C
- Integrated cable guide for a smooth overall surface and easy cleaning

Safety features

The door is designed according to the Workplace Directive of the UVV regulations and the harmonized CE Guidelines including the EN 13241-1.

Indication of Risks

The security of the door is designed for normal use corresponding to the harmonized CE-Guidelines. In addition to this, harsh environmental conditions may affect the proper use of cleanroom doors. Therefore, we recommend that you consult your local sales engineer for expert advice on your unique environment.

Door curtain	Colored fabric reinforcement strips (Color code according to RAL color card)	
	clear PVC with stripes	clear PVC with stripes silicone-free
Blue	• 5002	• 5010
Red	• 3002	• 3002
Orange	• 2011	• 2011
Grey	• 7035	• 7037
Yellow	• 1021	• 1021
Green	• 6018	
Beige	• 1014	
White	✓ 9016	• 9010
Black		• 9005

✓ Standard • Option

2) Deviations possible depending on other properties

3) Depending on cycles/minute, door size and installation location

TECHNICAL DATA

Application	Interior door Cleanroom ISO Class 5
Door dimensions (mm) (DW min./max.) (DH min./max.) with UPS min. Width	1000 / 3500 1000 / 3500 1500
Open/Close max. (m/s) ²⁾	2,0 / 1,0
Wind resistance (EN 12424)	max. Diff. 50 Pa
Leakage (EN 12426)	21m ³ /h at 25 Pa at DW=1500 and DH=2000
Temperature range max. ³⁾	+10°C – +40°C +15°C – +30°C with UPS

Surface / Material

Side frame	<ul style="list-style-type: none"> ✓ Stainless steel • Galvanized steel • Powder coated steel
Bottom profile ²⁾	<ul style="list-style-type: none"> ✓ Stainless steel • Galvanized steel • Powder coated steel
Top roll cover	<ul style="list-style-type: none"> ✓ Stainless steel • Galvanized steel • Powder coated steel
Motor cover ²⁾	<ul style="list-style-type: none"> ✓ Stainless steel • Stainless steel painted

Safety features

Electrical safety contact edge ²⁾	✓
Door line photocell in side frame	✓
Pre-running photocell ²⁾ (only in combination with MCC)	•
Drop down protection in drive unit	Catching-device
Automatic egress by power failure	• UPS

Equipment

LED traffic light	•
Traffic light with direction detection	✓ MCC (not possible with ACS 50)
Traffic light without direction detection	✓
Diagnostic display	✓ Text message
Flashing alarm light	•
Magic Switch	•
Lintel seal	✓

Drive unit

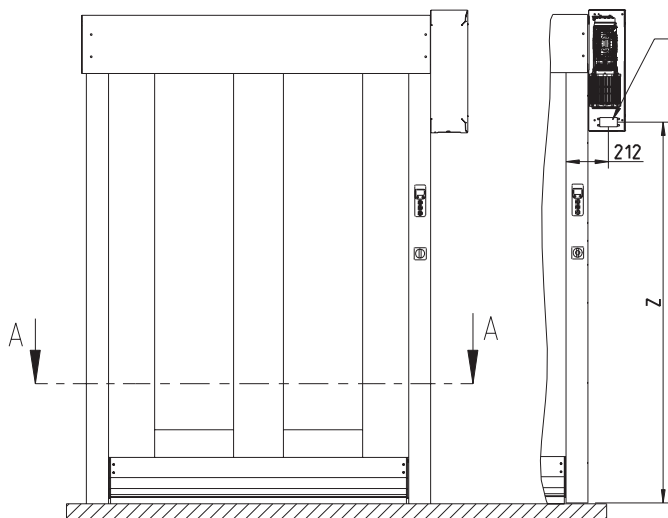
Motor power	GfA 0,75 KW
Gear heating	•
Manual activation	Crank handle

Control system²⁾

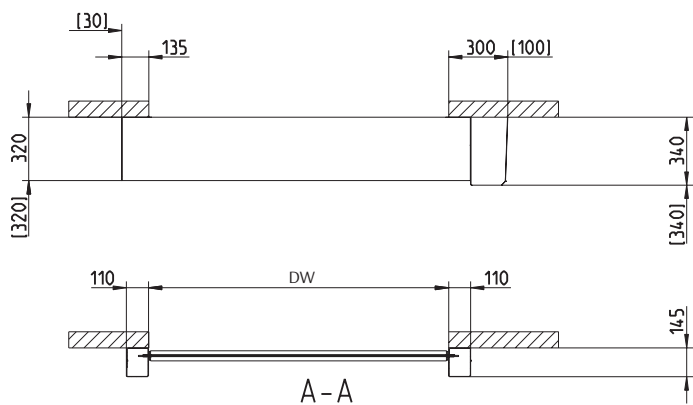
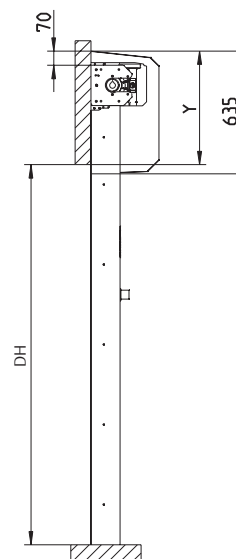
MCC: Open/Close max. (m/s) ²⁾	✓ 2,0 / 1,0
ACS 50: Open/Close max. (m/s) ²⁾	• 1,0 / 1,0
Separate display / control	only with MCC
Fuse protection by site MCC	10 – 16 A (B- and C-characteristics)
Fuse protection by site ACS 50	16 A (C-characteristics)
Potential-free contacts	<ul style="list-style-type: none"> • MCC ✓ ACS50
UL-Version	• (only with MCC)
AC mains connection for MCC	3L(N)PE/380/400/415/440/480V
AC mains connection for ACS 50	3L(N)PE/230/380/400/415V
Control voltage	24 V DC
Protection	IP 55

General Drawing/ Fixing Plan ASSA ABLOY RR300 Clean

without motorcover



possible cable routing
88 x 45

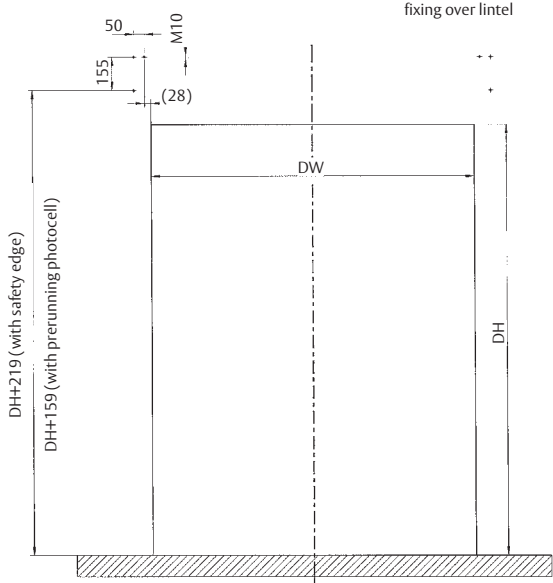


	Y	Z
with safety edge	470	DH - 93
with pre-running photocell	410	DH - 153

Available Sizes		
	DW	DH
min. (mm)	1000	1000
max. (mm)	3500	3500
min. (mm) with UPS and MCC extension	1500	1000
min. (mm) with USV without MCC extension	1350	1000

[] = Space needed for installation

fixing over lintel



fixing to floor



ASSA ABLOY Entrance Systems is a leading supplier of entrance automation solutions for the efficient flow of goods and people. Building on the long-term success of the Besam, Crawford, Albany and Megadoor brands, we offer our solutions under the ASSA ABLOY brand. Our products and services are dedicated to satisfying end-user needs for safe, secure, convenient and sustainable operations.
ASSA ABLOY Entrance Systems is a division of ASSA ABLOY.

ASSA ABLOY

assaabloyentrance.com



ASSA ABLOY Entrance Systems

info.entrance@assaabloy.com
assaabloyentrance.com

Follow us:



Please enter ASSA ABLOY Entrance in the channel's search field.