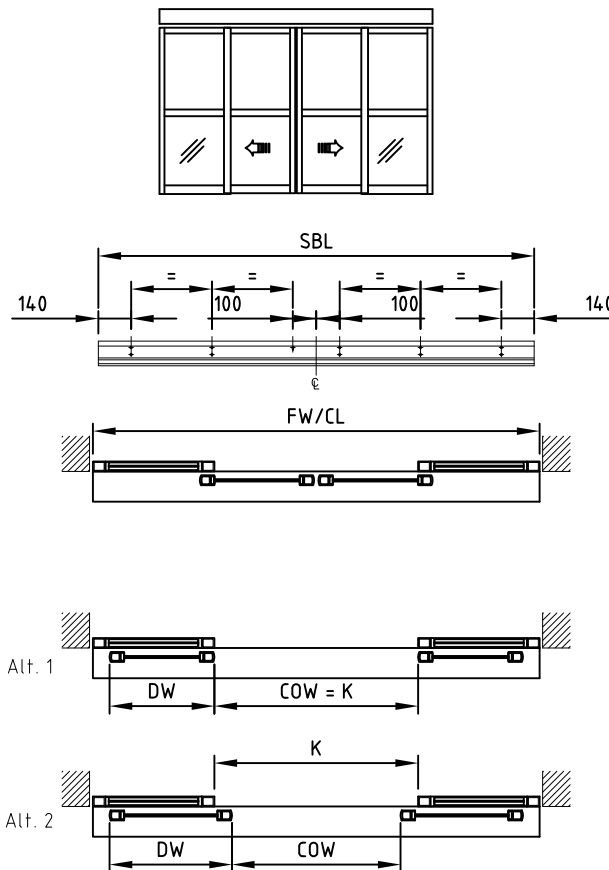
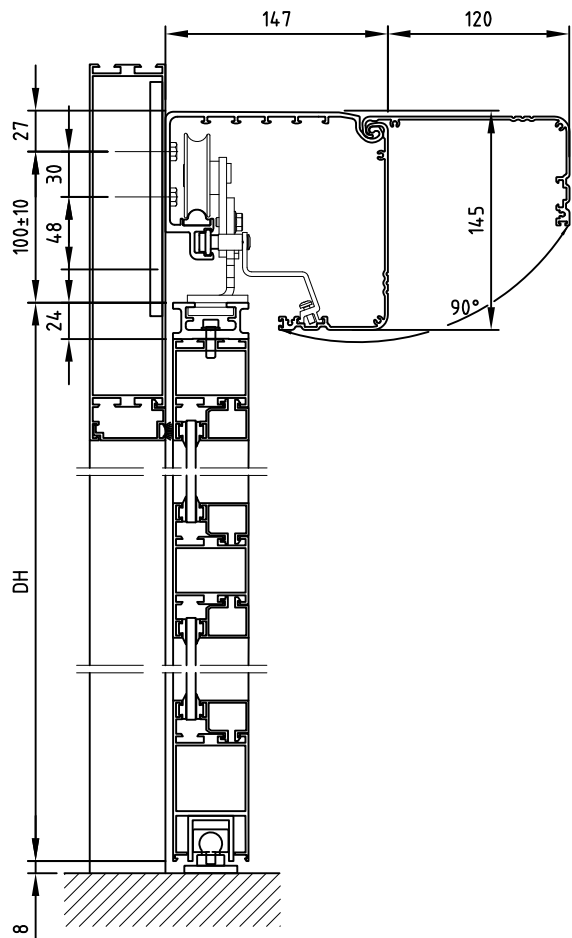


© All rights in and to this material are the sole property of Entrematic AB. Rights reserved for changes without prior notice. Copying, scanning, alterations or modifications are expressly forbidden without the prior written consent of Entrematic AB.



FW= Frame width *Max. 5884*
 FH= Frame height *Max. 3000*
 COH= Clear opening height
 COW = Clear opening width
Min. 900, Max. 2867
 CL = Cover length incl end plates
Min. 1950, Max. 5884
 DH = Door leaf height
 SBL = Support beam length
 DW= Door width (If door adaptor state DW)
 K= Clear opening width, fixed screens

State when ordering

Alt. 1
 Alt. 2
 FW/CL=.....mm
 FH=.....mm
 COH=.....mm
 COW=.....mm
 DW=.....mm
 See 1000156

Surface treatment

Silver anodized
 Special anodized.....
 Powder coated
 Colour

Customer: _____

Door id: _____

Project No: _____

Ref: _____

Date: _____

Sign: _____

**Sliding door operator
EMSL-2**



ENTREMATIC

6 833081-EME1